



# **Appendix B8**

Traffic Signs and  
Road Markings





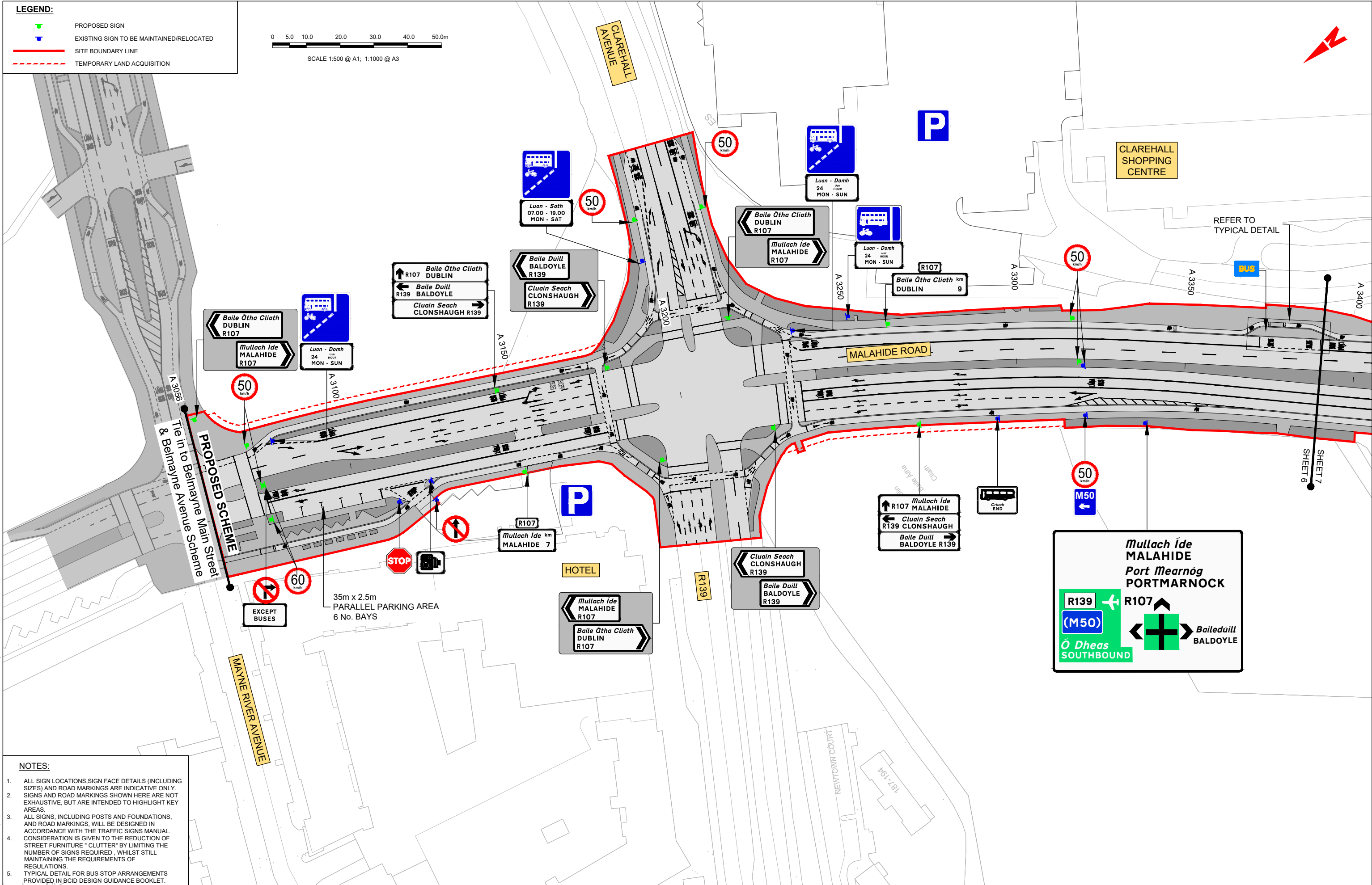
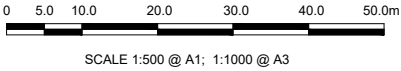






**LEGEND:**

- PROPOSED SIGN
- EXISTING SIGN TO BE MAINTAINED/RELOCATED
- SITE BOUNDARY LINE
- TEMPORARY LAND ACQUISITION



- NOTES:**
- ALL SIGN LOCATIONS, SIGN FACE DETAILS (INCLUDING SIZES) AND ROAD MARKINGS ARE INDICATIVE ONLY. SIGNS AND ROAD MARKINGS SHOWN HERE ARE NOT EXHAUSTIVE, BUT ARE INTENDED TO HIGHLIGHT KEY AREAS.
  - ALL SIGNS, INCLUDING POSTS AND FOUNDATIONS, AND ROAD MARKINGS, WILL BE DESIGNED IN ACCORDANCE WITH THE TRAFFIC SIGNS MANUAL. CONSIDERATION IS GIVEN TO THE REDUCTION OF STREET FURNITURE "CLUTTER" BY LIMITING THE NUMBER OF SIGNS REQUIRED, WHILST STILL MAINTAINING THE REQUIREMENTS OF REGULATIONS.
  - TYPICAL DETAIL FOR BUS STOP ARRANGEMENTS PROVIDED IN BCID DESIGN GUIDANCE BOOKLET.

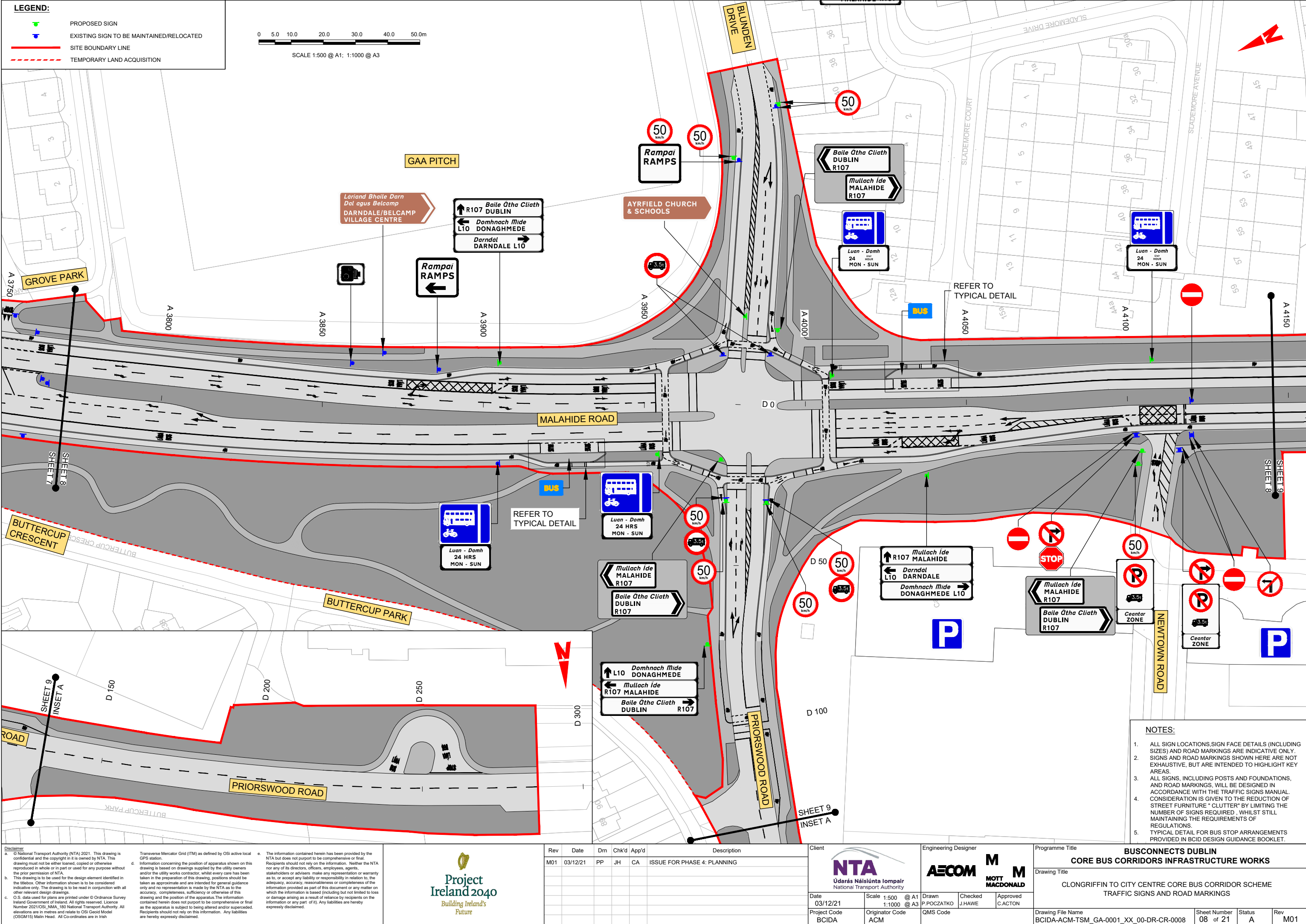
<p><small>Disclaimer</small></p> <p>a. © National Transport Authority (NTA) 2021. This drawing is confidential and the copyright in it is owned by NTA. This drawing must not be either loaned, copied or otherwise reproduced in whole or in part or used for any purpose without the prior permission of NTA.</p> <p>b. This drawing is to be used for the design element identified in the titlebox. Other information shown is to be considered indicative only. The drawing is to be read in conjunction with all other relevant design drawings.</p> <p>c. O.S. data used for plans are printed under © Ordnance Survey Ireland Government of Ireland. All rights reserved. Licence Number 2021/O.S. NMA, 180 National Transport Authority. All elevations are in metres and relate to OSI Geoid Model (OSGM15) Mean Head. All Co-ordinates are in Irish Transverse Mercator Grid (ITM) as defined by OSI active local GPS station.</p> <p>d. Information concerning the position of apparatus shown on this drawing is based on drawings supplied by the utility owners and/or the utility works contractor, whilst every care has been taken in the preparation of this drawing, positions should be taken as approximate and are intended for general guidance only and no representation is made by the NTA as to the accuracy, completeness, sufficiency or otherwise of this drawing and the position of the apparatus. The information contained herein does not purport to be comprehensive or final as the apparatus is subject to being altered and/or superceded. Recipients should not rely on this information. Any liabilities are hereby expressly disclaimed.</p> <p>e. The information contained herein has been provided by the NTA but does not purport to be comprehensive or final. Recipients should not rely on the information. Neither the NTA nor any of its directors, officers, employees, agents, stakeholders or advisers make any representation or warranty as to, or accept any liability or responsibility in relation to, the adequacy, accuracy, reasonableness or completeness of the information provided as part of this document or any matter on which the information is based (including but not limited to loss or damage arising as a result of reliance by recipients on the information or any part of it). Any liabilities are hereby expressly disclaimed.</p>		<p>Rev M01 Date 03/12/21 Dm PP Chk'd JH App'd CA Description ISSUE FOR PHASE 4: PLANNING</p>		<p>Client <b>NTA</b> Údarás Náisiúnta Iompair National Transport Authority</p> <p>Date 03/12/21 Scale 1:500 @ A1 1:1000 @ A3 Project Code BCIDA Originator Code ACM</p>		<p>Engineering Designer <b>AECOM</b> <b>MOTT MACDONALD</b></p> <p>Drawn P.POCZATKO Checked J.H.AWE Approved C.ACTON</p>		<p>Programme Title <b>BUSCONNECTS DUBLIN</b> <b>CORE BUS CORRIDORS INFRASTRUCTURE WORKS</b></p> <p>Drawing Title <b>CLONGRIFFIN TO CITY CENTRE CORE BUS CORRIDOR SCHEME</b> <b>TRAFFIC SIGNS AND ROAD MARKINGS</b></p> <p>Drawing File Name BCIDA-ACM-TSM_GA-0001_XX_00-DR-CR-0006 Sheet Number 06 of 21 Status A Rev M01</p>			
---	--	--	--	---	--	---	--	---	--	--	--

DO NOT SCALE USE FIGURED DIMENSIONS ONLY









C:\Users\zak42254\OneDrive - Mott MacDonald\Desktop\A\_PDF\BCIDA-ACM-TSM\_GA-0001\_XX\_00-DR-CR-0008.dwg

**Disclaimer**

a. © National Transport Authority (NTA) 2021. This drawing is confidential and the copyright in it is owned by NTA. This drawing must not be either loaned, copied or otherwise reproduced in whole or in part or used for any purpose without the prior permission of NTA.

b. This drawing is to be used for the design element identified in the titleblock. Other information shown is to be considered indicative only. The drawing is to be read in conjunction with all other relevant design drawings.

c. O.S. data used for plans are printed under © Ordnance Survey Ireland Government of Ireland. All rights reserved. Licence Number 2021/OSI\_NMA\_180 National Transport Authority. All elevations are in metres and relate to OSI Geoid Model (OSGM15) Mean Head. All Co-ordinates are in Irish Transverse Mercator Grid (ITM) as defined by OSI active local GPS station.

d. Information concerning the position of apparatus shown on this drawing is based on drawings supplied by the utility owners and/or the utility works contractor, whilst every care has been taken in the preparation of this drawing, positions should be taken as approximate and are intended for general guidance only and no representation is made by the NTA as to the accuracy, completeness, sufficiency or otherwise of this drawing and the position of the apparatus. The information contained herein does not purport to be comprehensive or final as the apparatus is subject to being altered and/or superceded. Recipients should not rely on this information. Any liabilities are hereby expressly disclaimed.

e. The information contained herein has been provided by the NTA but does not purport to be comprehensive or final. Recipients should not rely on the information. Neither the NTA nor any of its directors, officers, employees, agents, stakeholders or advisers make any representation or warranty as to, or accept any liability or responsibility in relation to, the adequacy, accuracy, reasonableness or completeness of the information provided as part of this document or any matter on which the information is based (including but not limited to loss or damage arising as a result of reliance by recipients on the information or any part of it). Any liabilities are hereby expressly disclaimed.

**Project Ireland 2040**  
Building Ireland's Future

DO NOT SCALE USE FIGURED DIMENSIONS ONLY

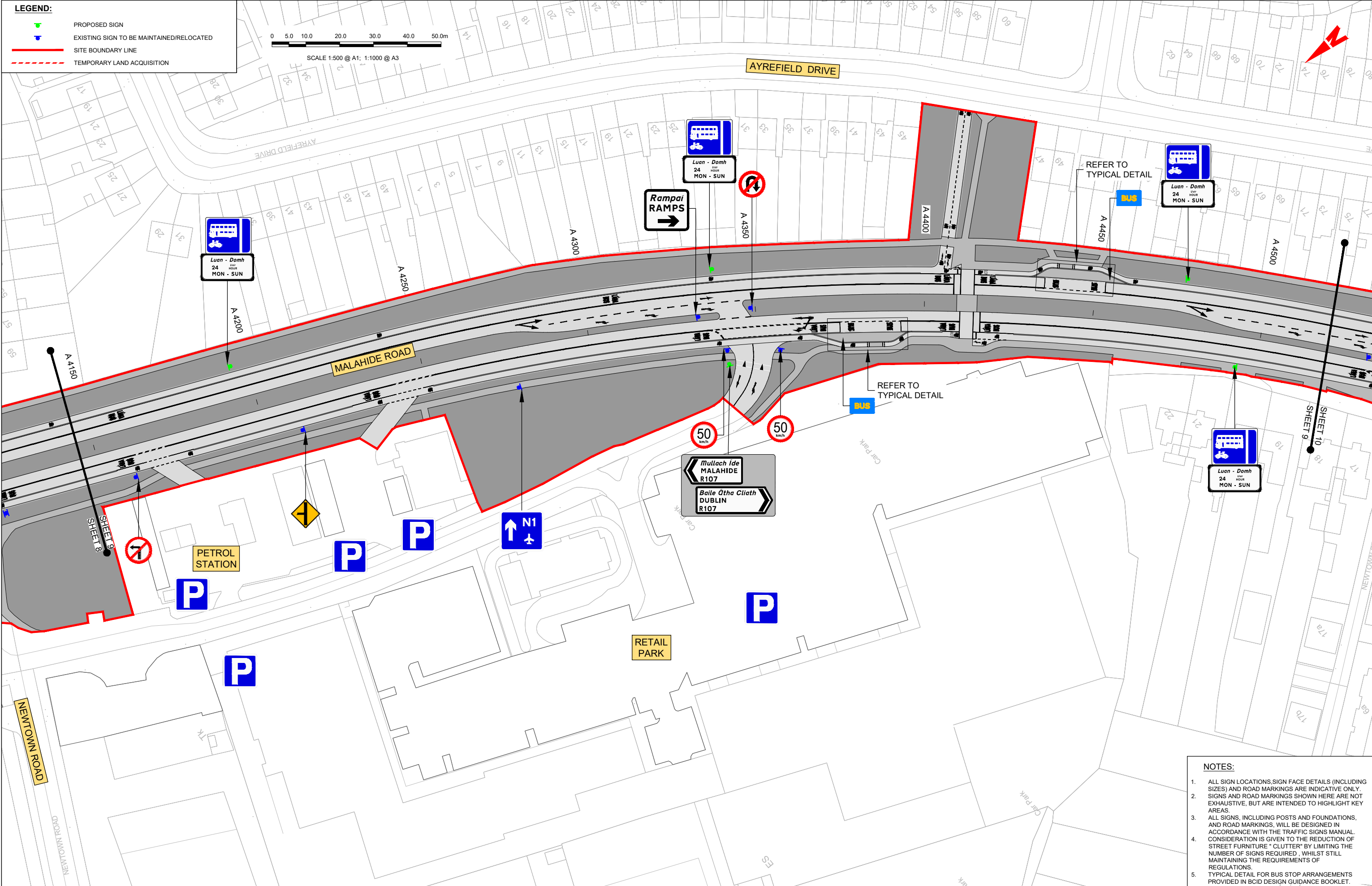


**LEGEND:**

- PROPOSED SIGN
- EXISTING SIGN TO BE MAINTAINED/RELOCATED
- SITE BOUNDARY LINE
- TEMPORARY LAND ACQUISITION



SCALE 1:500 @ A1; 1:1000 @ A3



**NOTES:**

- ALL SIGN LOCATIONS, SIGN FACE DETAILS (INCLUDING SIZES) AND ROAD MARKINGS ARE INDICATIVE ONLY. SIGNS AND ROAD MARKINGS SHOWN HERE ARE NOT EXHAUSTIVE, BUT ARE INTENDED TO HIGHLIGHT KEY AREAS.
- ALL SIGNS, INCLUDING POSTS AND FOUNDATIONS, AND ROAD MARKINGS, WILL BE DESIGNED IN ACCORDANCE WITH THE TRAFFIC SIGNS MANUAL. CONSIDERATION IS GIVEN TO THE REDUCTION OF STREET FURNITURE "CLUTTER" BY LIMITING THE NUMBER OF SIGNS REQUIRED, WHILST STILL MAINTAINING THE REQUIREMENTS OF REGULATIONS.
- TYPICAL DETAIL FOR BUS STOP ARRANGEMENTS PROVIDED IN BCID DESIGN GUIDANCE BOOKLET.

**Disclaimer**

a. © National Transport Authority (NTA) 2021. This drawing is confidential and the copyright in it is owned by NTA. This drawing must not be either loaned, copied or otherwise reproduced in whole or in part or used for any purpose without the prior permission of NTA.

b. This drawing is to be used for the design element identified in the titlebox. Other information shown is to be considered indicative only. The drawing is to be read in conjunction with all other relevant design drawings.

c. O.S. data used for plans are printed under © Ordnance Survey Ireland Government of Ireland. All rights reserved. Licence Number 2021/O.S.\_NMA\_180 National Transport Authority. All elevations are in metres and relate to OSI Geoid Model (OSGM15) Mean Head. All Co-ordinates are in Irish Transverse Mercator Grid (ITM) as defined by OSI active local GPS station.

d. Information concerning the position of apparatus shown on this drawing is based on drawings supplied by the utility owners and/or the utility works contractor, whilst every care has been taken in the preparation of this drawing, positions should be taken as approximate and are intended for general guidance only and no representation is made by the NTA as to the accuracy, completeness, sufficiency or otherwise of this drawing and the position of the apparatus. The information contained herein does not purport to be comprehensive or final as the apparatus is subject to being altered and/or superseded. Recipients should not rely on this information. Any liabilities are hereby expressly disclaimed.

e. The information contained herein has been provided by the NTA but does not purport to be comprehensive or final. Recipients should not rely on the information. Neither the NTA nor any of its directors, officers, employees, agents, stakeholders or advisers make any representation or warranty as to, or accept any liability or responsibility in relation to, the adequacy, accuracy, reasonableness or completeness of the information provided as part of this document or any matter on which the information is based (including but not limited to loss or damage arising as a result of reliance by recipients on the information or any part of it). Any liabilities are hereby expressly disclaimed.

**Project Ireland 2040**

Building Ireland's Future

Rev	Date	Drm	Chk'd	App'd	Description
M01	03/12/21	PP	JH	CA	ISSUE FOR PHASE 4: PLANNING

**Client**

**NTA**  
Údarás Náisiúnta Iompair  
National Transport Authority

**Engineering Designer**

**AECOM** **MOTT MACDONALD**

Date	Scale	@ A1	Drawn	Checked	Approved
03/12/21	1:500 @ A1 1:1000 @ A3		P.POCZATKO	J.HAWE	C.ACTON

Project Code	Originator Code	QMS Code
BCIDA	ACM	

**Programme Title**

**BUSCONNECTS DUBLIN**  
**CORE BUS CORRIDORS INFRASTRUCTURE WORKS**

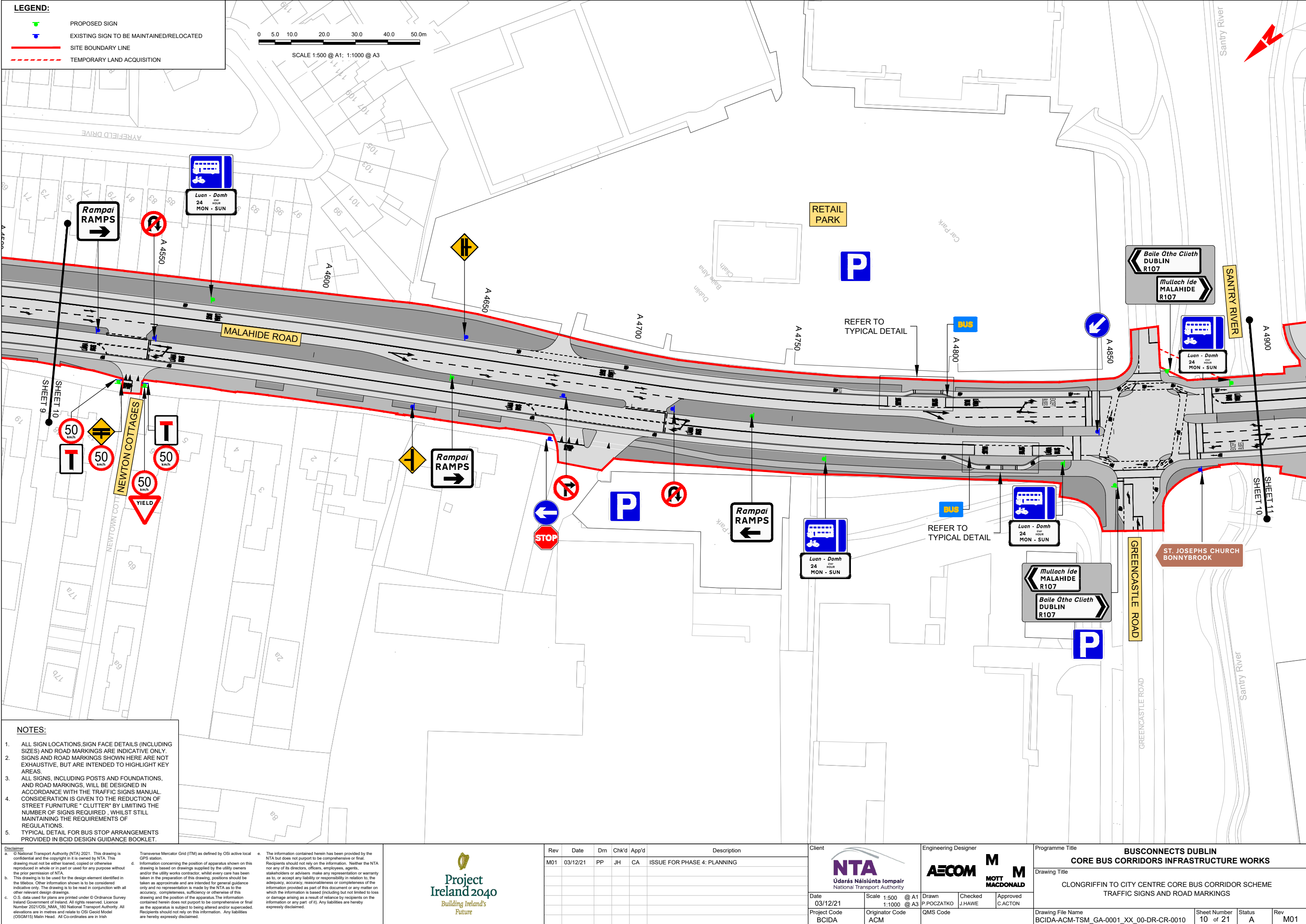
**Drawing Title**

CLONGRIFFIN TO CITY CENTRE CORE BUS CORRIDOR SCHEME  
TRAFFIC SIGNS AND ROAD MARKINGS

Drawing File Name	Sheet Number	Status	Rev
BCIDA-ACM-TSM_GA-0001_XX_00-DR-CR-0009	09 of 21	A	M01

DO NOT SCALE USE FIGURED DIMENSIONS ONLY

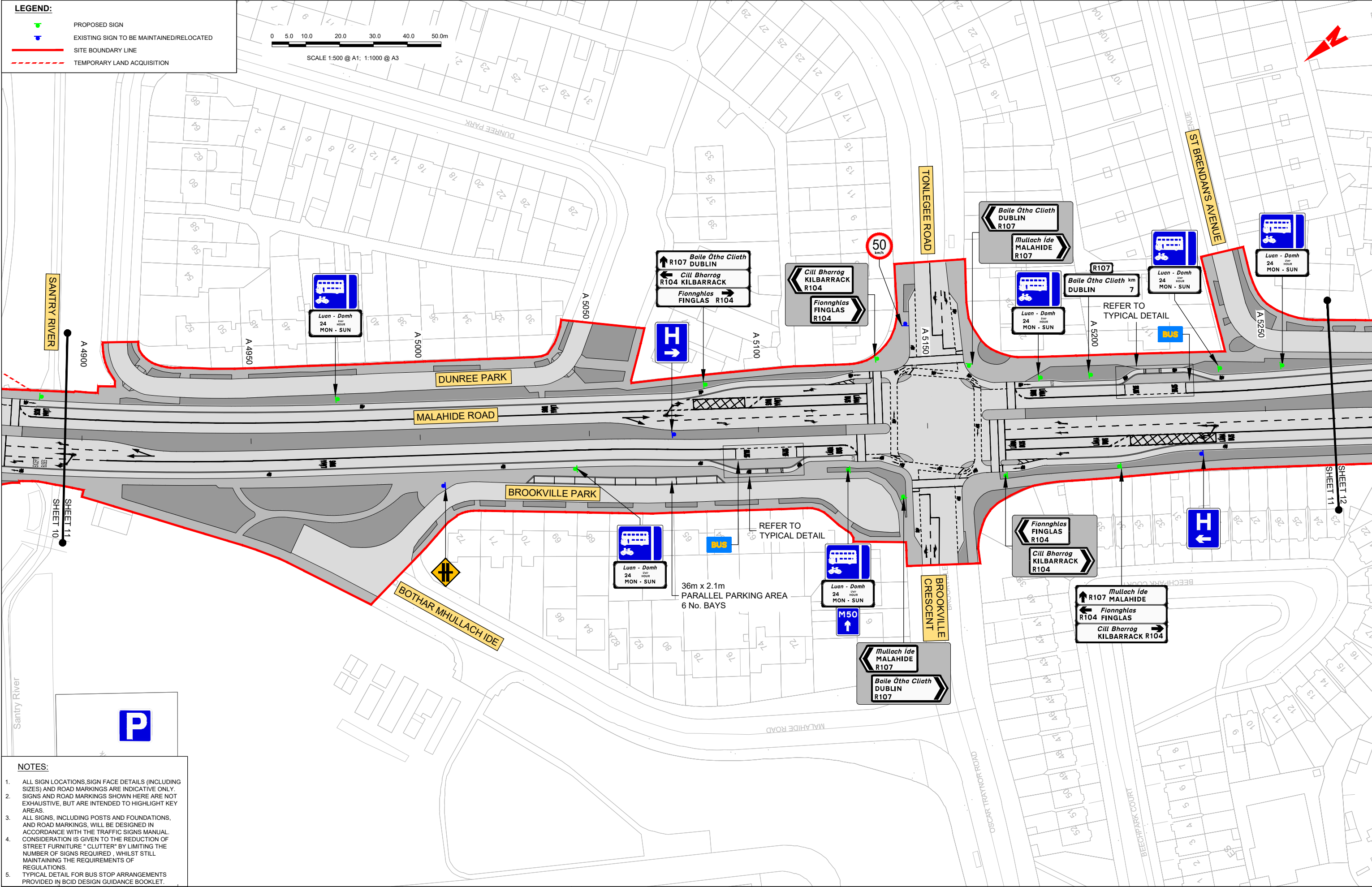
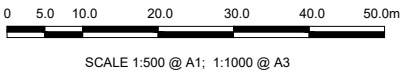






**LEGEND:**

- PROPOSED SIGN
- EXISTING SIGN TO BE MAINTAINED/RELOCATED
- SITE BOUNDARY LINE
- TEMPORARY LAND ACQUISITION



- NOTES:**
- ALL SIGN LOCATIONS, SIGN FACE DETAILS (INCLUDING SIZES) AND ROAD MARKINGS ARE INDICATIVE ONLY. SIGNS AND ROAD MARKINGS SHOWN HERE ARE NOT EXHAUSTIVE, BUT ARE INTENDED TO HIGHLIGHT KEY AREAS.
  - ALL SIGNS, INCLUDING POSTS AND FOUNDATIONS, AND ROAD MARKINGS, WILL BE DESIGNED IN ACCORDANCE WITH THE TRAFFIC SIGNS MANUAL. CONSIDERATION IS GIVEN TO THE REDUCTION OF STREET FURNITURE "CLUTTER" BY LIMITING THE NUMBER OF SIGNS REQUIRED, WHILST STILL MAINTAINING THE REQUIREMENTS OF REGULATIONS.
  - TYPICAL DETAIL FOR BUS STOP ARRANGEMENTS PROVIDED IN BCID DESIGN GUIDANCE BOOKLET.

**Disclaimer**

a. © National Transport Authority (NTA) 2021. This drawing is confidential and the copyright in it is owned by NTA. This drawing must not be either loaned, copied or otherwise reproduced in whole or in part or used for any purpose without the prior permission of NTA.

b. This drawing is to be used for the design element identified in the titleblock. Other information shown is to be considered indicative only. The drawing is to be read in conjunction with all other relevant design drawings.

c. O.S. data used for plans are printed under © Ordnance Survey Ireland Government of Ireland. All rights reserved. Licence Number 2021/OSI\_NMA\_180 National Transport Authority. All elevations are in metres and relate to OSI Geoid Model (OSGM15) Mean Head. All Co-ordinates are in Irish Transverse Mercator Grid (ITM) as defined by OSI active local GPS station.

d. Information concerning the position of apparatus shown on this drawing is based on drawings supplied by the utility owners and/or the utility works contractor, whilst every care has been taken in the preparation of this drawing, positions should be taken as approximate and are intended for general guidance only and no representation is made by the NTA as to the accuracy, completeness, sufficiency or otherwise of this drawing and the position of the apparatus. The information contained herein does not purport to be comprehensive or final as the apparatus is subject to being altered and/or superceded. Recipients should not rely on this information. Any liabilities are hereby expressly disclaimed.

e. The information contained herein has been provided by the NTA but does not purport to be comprehensive or final. Recipients should not rely on the information. Neither the NTA nor any of its directors, officers, employees, agents, stakeholders or advisers make any representation or warranty as to, or accept any liability or responsibility in relation to, the adequacy, accuracy, reasonableness or completeness of the information provided as part of this document or any matter on which the information is based (including but not limited to loss or damage arising as a result of reliance by recipients on the information or any part of it). Any liabilities are hereby expressly disclaimed.



Rev	Date	Drm	Chk'd	App'd	Description
M01	03/12/21	PP	JH	CA	ISSUE FOR PHASE 4: PLANNING

Client: **NTA**  
Údarás Náisiúnta Iompair  
National Transport Authority

Date: 03/12/21  
Scale: 1:500 @ A1  
1:1000 @ A3

Project Code: BCIDA  
Originator Code: ACM

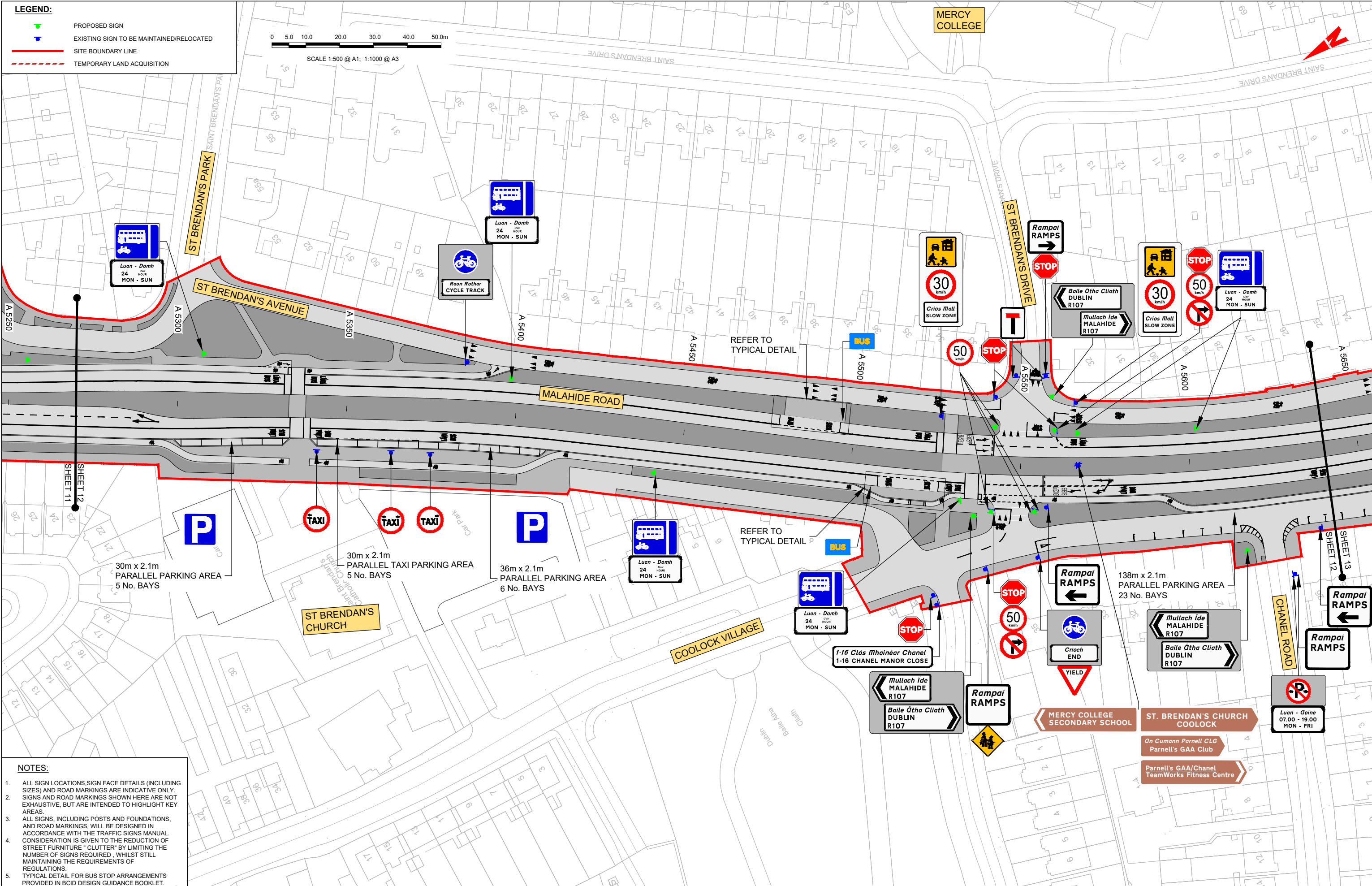
Engineering Designer: **AECOM**  
MOTT MACDONALD

Drawn: P.POCZATKO  
Checked: J.HAWE  
Approved: C.ACTON

Programme Title	BUSCONNECTS DUBLIN CORE BUS CORRIDORS INFRASTRUCTURE WORKS			
Drawing Title	CLONGRIFFIN TO CITY CENTRE CORE BUS CORRIDOR SCHEME TRAFFIC SIGNS AND ROAD MARKINGS			
Drawing File Name	BCIDA-ACM-TSM_GA-0001_XX_00-DR-CR-0011	Sheet Number	11 of 21	Status
			A	Rev
				M01

DO NOT SCALE USE FIGURED DIMENSIONS ONLY





NOTES:

1. ALL SIGN LOCATIONS, SIGN FACE DETAILS (INCLUDING SIZES) AND ROAD MARKINGS ARE INDICATIVE ONLY.
2. SIGNS AND ROAD MARKINGS SHOWN HERE ARE NOT EXHAUSTIVE, BUT ARE INTENDED TO HIGHLIGHT KEY AREAS.
3. ALL SIGNS, INCLUDING POSTS AND FOUNDATIONS, AND ROAD MARKINGS, WILL BE DESIGNED IN ACCORDANCE WITH THE TRAFFIC SIGNS MANUAL.
4. CONSIDERATION IS GIVEN TO THE REDUCTION OF SIGN FURNITURE 'CLUTTER' BY LIMITING THE NUMBER OF SIGNS REQUIRED, WHILE STILL MAINTAINING THE REQUIREMENTS OF REGULATIONS.
5. TYPICAL DETAIL FOR BUS STOP ARRANGEMENTS PROVIDED IN BCSD DESIGN GUIDANCE BOOKLET.

**Disclaimer**

a. © National Transport Authority (NTA) 2021. This drawing is confidential and the copyright in it is owned by NTA. This drawing must not be either loaned, copied or otherwise reproduced in whole or in part or used for any purpose without the prior permission of NTA.

b. This drawing is to be used for the design element identified in the titlebox. Other information shown is to be considered indicative only. The drawing is to be read in conjunction with all other relevant design drawings.

c. O.S. data used for plans are printed under Ordnance Survey Ireland Government Authority. All rights reserved. Licence Number 2021/OSI\_NMA\_180 National Transport Authority. All elevations are in metres and relate to OSI Geoid Model (OSGM15) Malin Head. All Co-ordinates are in Irish

Transverse Mercator Grid (ITM) as defined by OSI active local GPS station.

Information concerning the position of apparatus shown on this drawing is based on drawings supplied by the utility owners and/or the utility works contractor, whilst every care has been taken in the preparation of this drawing, positions should be taken as approximate and are intended for general guidance only and no representation is made by the NTA as to the accuracy, completeness, sufficiency or otherwise of this drawing and the position of the apparatus. The information contained herein does not purport to be comprehensive or final as the apparatus is subject to being altered and/or superseded. Recipients should not rely on this information. Any liabilities are hereby expressly disclaimed.

e. The information contained herein has been provided by the NTA but does not purport to be comprehensive or final. Recipients should not rely on the information. Neither the NTA nor any of its directors, officers, employees, agents, stakeholders or advisers make any representation or warranty as to, or accept any liability or responsibility in relation to, the adequacy, accuracy, reasonableness or completeness of the information provided as part of this document or any matter on which the information is based (including but not limited to loss or damage arising as a result of reliance by recipients on the information or any part of it). Any liabilities are hereby expressly disclaimed.



Rev	Date	Dwn	Chk'd	App'd	Description
M01	03/12/21	PP	JH	CA	ISSUE FOR PHASE 4: PLANNING

Client

  
**NTA**  
Údarás Náisiúnta Iompair  
National Transport Authority

Date 03/12/21	Scale 1:500 1:1000
Project Code BCIDA	Originator Code ACM

Engineering Designer

**AECOM** **M** **M**  
**MOTT**  
**MACDONALD**

Drawn P.POCZATKO	Checked J.HAWE	Approved C.ACTON
QMS Code		

Programme Title	<b>BUSCONNECTS DUBLIN CORE BUS CORRIDORS INFRASTRUCTURE WORKS</b>
-----------------	---

Drawing Title

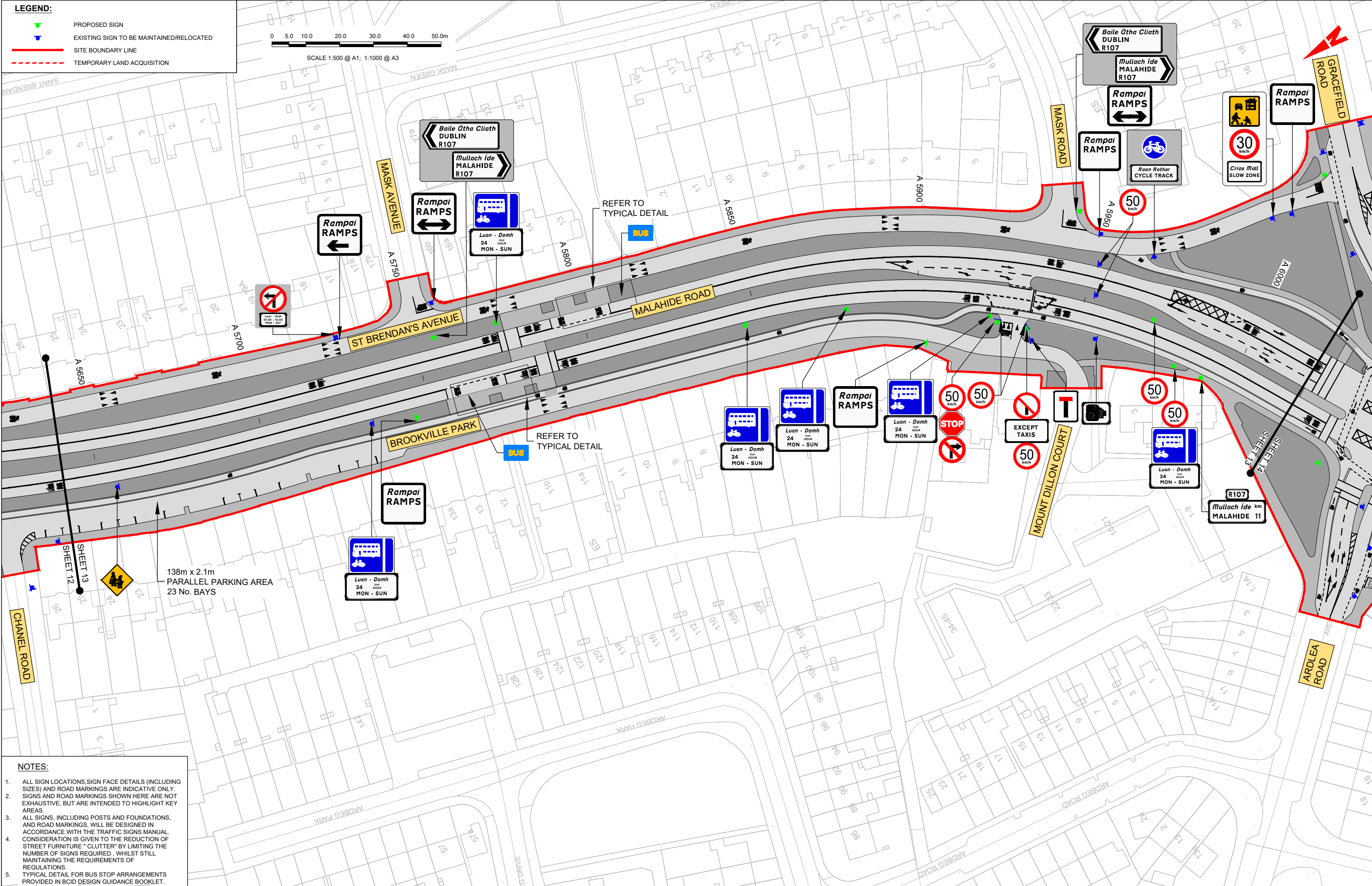
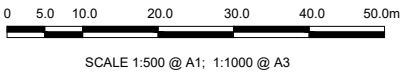
CLONGRIFFIN TO CITY CENTRE CORE BUS CORRIDOR SCHEME  
TRAFFIC SIGNS AND ROAD MARKINGS

Drawing File Name	Sheet Number	Status	Rev
BCIDA-ACM-TSM GA-0001 XX 00-DR-CR-0012	12 of 21	A	M01



**LEGEND:**

- PROPOSED SIGN
- EXISTING SIGN TO BE MAINTAINED/RELOCATED
- SITE BOUNDARY LINE
- TEMPORARY LAND ACQUISITION



- NOTES:**
- ALL SIGN LOCATIONS, SIGN FACE DETAILS (INCLUDING SIZES) AND ROAD MARKINGS ARE INDICATIVE ONLY. SIGNS AND ROAD MARKINGS SHOWN HERE ARE NOT EXHAUSTIVE, BUT ARE INTENDED TO HIGHLIGHT KEY AREAS.
  - ALL SIGNS, INCLUDING POSTS AND FOUNDATIONS, AND ROAD MARKINGS, WILL BE DESIGNED IN ACCORDANCE WITH THE TRAFFIC SIGNS MANUAL. CONSIDERATION IS GIVEN TO THE REDUCTION OF STREET FURNITURE "CLUTTER" BY LIMITING THE NUMBER OF SIGNS REQUIRED, WHILST STILL MAINTAINING THE REQUIREMENTS OF REGULATIONS.
  - TYPICAL DETAIL FOR BUS STOP ARRANGEMENTS PROVIDED IN BCID DESIGN GUIDANCE BOOKLET.

**Disclaimer**

a. © National Transport Authority (NTA) 2021. This drawing is confidential and the copyright in it is owned by NTA. This drawing must not be either loaned, copied or otherwise reproduced in whole or in part or used for any purpose without the prior permission of NTA.

b. This drawing is to be used for the design element identified in the titlebox. Other information shown is to be considered indicative only. The drawing is to be read in conjunction with all other relevant design drawings.

c. O.S. data used for plans are printed under © Ordnance Survey Ireland Government of Ireland. All rights reserved. Licence Number 2021/OSI\_NMA\_180 National Transport Authority. All elevations are in metres and relate to OSI Geoid Model (OSGM15) Mean Head. All Co-ordinates are in Irish Transverse Mercator Grid (ITM) as defined by OSI active local GPS station.

d. Information concerning the position of apparatus shown on this drawing is based on drawings supplied by the utility owners and/or the utility works contractor, whilst every care has been taken in the preparation of this drawing, positions should be taken as approximate and are intended for general guidance only and no representation is made by the NTA as to the accuracy, completeness, sufficiency or otherwise of this drawing and the position of the apparatus. The information contained herein does not purport to be comprehensive or final as the apparatus is subject to being altered and/or superceded. Recipients should not rely on this information. Any liabilities are hereby expressly disclaimed.

e. The information contained herein has been provided by the NTA but does not purport to be comprehensive or final. Recipients should not rely on the information. Neither the NTA nor any of its directors, officers, employees, agents, stakeholders or advisers make any representation or warranty as to, or accept any liability or responsibility in relation to, the adequacy, accuracy, reasonableness or completeness of the information provided as part of this document or any matter on which the information is based (including but not limited to loss or damage arising as a result of reliance by recipients on the information or any part of it). Any liabilities are hereby expressly disclaimed.



Rev	Date	Drm	Chk'd	App'd	Description
M01	03/12/21	PP	JH	CA	ISSUE FOR PHASE 4: PLANNING

**NTA**  
Údarás Náisiúnta Iompair  
National Transport Authority

Date: 03/12/21  
Project Code: BCIDA

Scale: 1:500 @ A1  
1:1000 @ A3

Originator Code: ACM

Engineering Designer: **AECOM**

Drawn: P.POCZATKO  
Checked: J.HAWE  
Approved: C.ACTON

Programme Title: **BUSCONNECTS DUBLIN  
CORE BUS CORRIDORS INFRASTRUCTURE WORKS**

Drawing Title: **CLONGRIFFIN TO CITY CENTRE CORE BUS CORRIDOR SCHEME  
TRAFFIC SIGNS AND ROAD MARKINGS**

Drawing File Name: BCIDA-ACM-TSM\_GA-0001\_XX\_00-DR-CR-0013

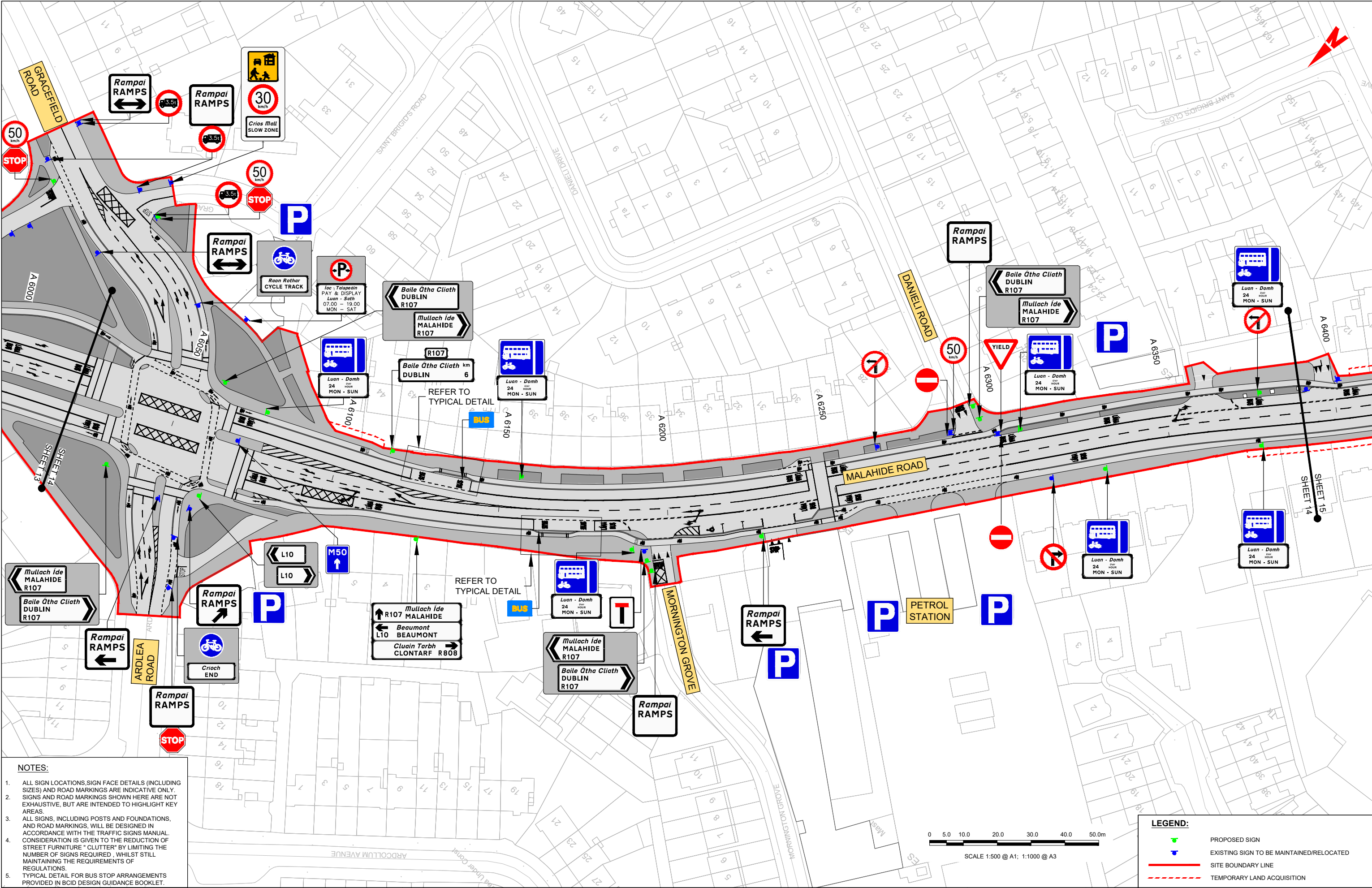
Sheet Number: 13 of 21

Status: A

Rev: M01

DO NOT SCALE USE FIGURED DIMENSIONS ONLY





NOTES:

1. ALL SIGN LOCATIONS, SIGN FACE DETAILS (INCLUDING SIZES) AND ROAD MARKINGS ARE INDICATIVE ONLY. SIGNS AND ROAD MARKINGS SHOWN HERE ARE NOT EXHAUSTIVE, BUT ARE INTENDED TO HIGHLIGHT KEY AREAS.
2. ALL SIGNS, INCLUDING POSTS AND FOUNDATIONS, AND ROAD MARKINGS, WILL BE DESIGNED IN ACCORDANCE WITH THE TRAFFIC SIGNS MANUAL. CONSIDERATION IS GIVEN TO THE REDUCTION OF STREET FURNITURE "CLUTTER" BY LIMITING THE NUMBER OF SIGNS REQUIRED, WHILST STILL MAINTAINING THE REQUIREMENTS OF REGULATIONS.
3. TYPICAL DETAIL FOR BUS STOP ARRANGEMENTS PROVIDED IN BCID DESIGN GUIDANCE BOOKLET.

**Disclaimer**  
a. © National Transport Authority (NTA) 2021. This drawing is confidential and the copyright in it is owned by NTA. This drawing must not be either loaned, copied or otherwise reproduced in whole or in part or used for any purpose without the prior permission of NTA.  
b. This drawing is to be used for the design element identified in the titlebox. Other information shown is to be considered indicative only. The drawing is to be read in conjunction with all other relevant design drawings.  
c. O.S. data used for plans are printed under © Ordnance Survey Ireland Government of Ireland. All rights reserved. Licence Number 2021/OSI\_NMA\_180 National Transport Authority. All elevations are in metres and relate to OSI Geoid Model (OSGM15) Mean Head. All Co-ordinates are in Irish Transverse Mercator Grid (ITM) as defined by OSI active local GPS station.  
d. Information concerning the position of apparatus shown on this drawing is based on drawings supplied by the utility owners and/or the utility works contractor, whilst every care has been taken in the preparation of this drawing, positions should be taken as approximate and are intended for general guidance only and no representation is made by the NTA as to the accuracy, completeness, sufficiency or otherwise of this drawing and the position of the apparatus. The information contained herein does not purport to be comprehensive or final as the apparatus is subject to being altered and/or superseded. Recipients should not rely on this information. Any liabilities are hereby expressly disclaimed.  
e. The information contained herein has been provided by the NTA but does not purport to be comprehensive or final. Recipients should not rely on the information. Neither the NTA nor any of its directors, officers, employees, agents, stakeholders or advisers make any representation or warranty as to, or accept any liability or responsibility in relation to, the adequacy, accuracy, reasonableness or completeness of the information provided as part of this document or any matter on which the information is based (including but not limited to loss or damage arising as a result of reliance by recipients on the information or any part of it). Any liabilities are hereby expressly disclaimed.



Rev	Date	Drm	Chk'd	App'd	Description
M01	03/12/21	PP	JH	CA	ISSUE FOR PHASE 4: PLANNING

<b>NTA</b> Údarás Náisiúnta Iompair National Transport Authority	
Date 03/12/21	Scale 1:500 @ A1 1:1000 @ A3
Project Code BCIDA	Originator Code ACM

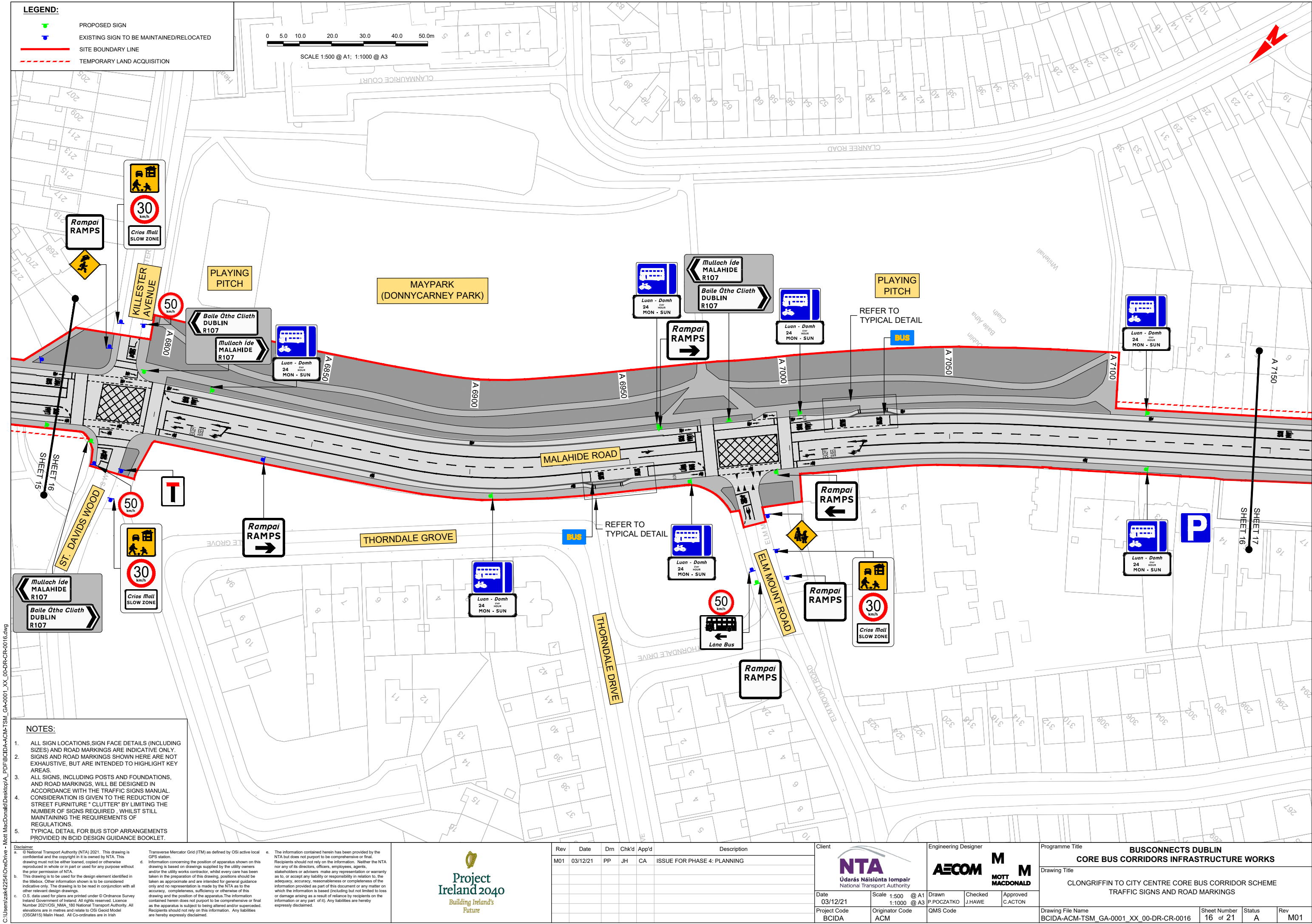
Engineering Designer <b>AECOM</b> <b>M</b> MOTT MACDONALD	
Drawn P.POCZATKO	Checked J.HAWE
Approved C.ACTON	

Programme Title <b>BUSCONNECTS DUBLIN</b> <b>CORE BUS CORRIDORS INFRASTRUCTURE WORKS</b>			
Drawing Title CLONGRIFFIN TO CITY CENTRE CORE BUS CORRIDOR SCHEME TRAFFIC SIGNS AND ROAD MARKINGS			
Drawing File Name BCIDA-ACM-TSM_GA-0001_XX_00-DR-CR-0014	Sheet Number 14 of 21	Status A	Rev M01





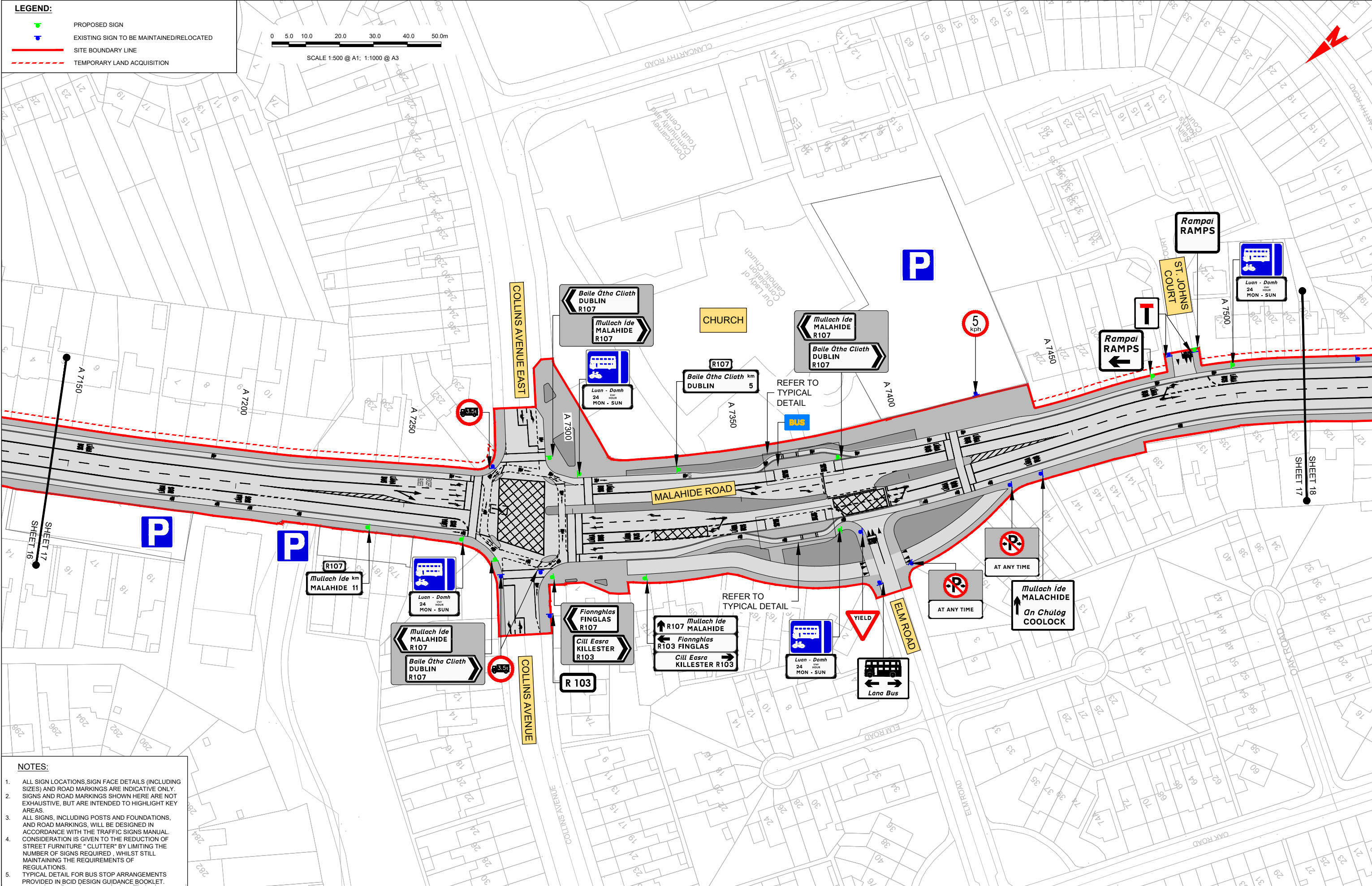
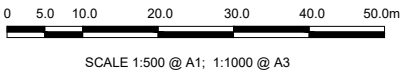






**LEGEND:**

- PROPOSED SIGN
- EXISTING SIGN TO BE MAINTAINED/RELOCATED
- SITE BOUNDARY LINE
- TEMPORARY LAND ACQUISITION



- NOTES:**
- ALL SIGN LOCATIONS, SIGN FACE DETAILS (INCLUDING SIZES) AND ROAD MARKINGS ARE INDICATIVE ONLY. SIGNS AND ROAD MARKINGS SHOWN HERE ARE NOT EXHAUSTIVE, BUT ARE INTENDED TO HIGHLIGHT KEY AREAS.
  - ALL SIGNS, INCLUDING POSTS AND FOUNDATIONS, AND ROAD MARKINGS, WILL BE DESIGNED IN ACCORDANCE WITH THE TRAFFIC SIGNS MANUAL. CONSIDERATION IS GIVEN TO THE REDUCTION OF STREET FURNITURE "CLUTTER" BY LIMITING THE NUMBER OF SIGNS REQUIRED, WHILE STILL MAINTAINING THE REQUIREMENTS OF REGULATIONS.
  - TYPICAL DETAIL FOR BUS STOP ARRANGEMENTS PROVIDED IN BCID DESIGN GUIDANCE BOOKLET.

**Disclaimer**

a. © National Transport Authority (NTA) 2021. This drawing is confidential and the copyright in it is owned by NTA. This drawing must not be either loaned, copied or otherwise reproduced in whole or in part or used for any purpose without the prior permission of NTA.

b. This drawing is to be used for the design element identified in the titleblock. Other information shown is to be considered indicative only. The drawing is to be read in conjunction with all other relevant design drawings.

c. O.S. data used for plans are printed under © Ordnance Survey Ireland Government of Ireland. All rights reserved. Licence Number 2021/OSI\_NMA\_180 National Transport Authority. All elevations are in metres and relate to OSI Geoid Model (OSGM15) Mean Head. All Co-ordinates are in Irish Transverse Mercator Grid (ITM) as defined by OSI active local GPS station.

d. Information concerning the position of apparatus shown on this drawing is based on drawings supplied by the utility owners and/or the utility works contractor, whilst every care has been taken in the preparation of this drawing, positions should be taken as approximate and are intended for general guidance only and no representation is made by the NTA as to the accuracy, completeness, sufficiency or otherwise of this drawing and the position of the apparatus. The information contained herein does not purport to be comprehensive or final as the apparatus is subject to being altered and/or superceded. Recipients should not rely on this information. Any liabilities are hereby expressly disclaimed.

e. The information contained herein has been provided by the NTA but does not purport to be comprehensive or final. Recipients should not rely on the information. Neither the NTA nor any of its directors, officers, employees, agents, stakeholders or advisers make any representation or warranty as to, or accept any liability or responsibility in relation to, the adequacy, accuracy, reasonableness or completeness of the information provided as part of this document or any matter on which the information is based (including but not limited to loss or damage arising as a result of reliance by recipients on the information or any part of it). Any liabilities are hereby expressly disclaimed.

Rev	Date	Drm	Chk'd	App'd	Description
M01	03/12/21	PP	JH	CA	ISSUE FOR PHASE 4: PLANNING

**NTA**  
Údarás Náisiúnta Iompair  
National Transport Authority

Date  
03/12/21

Project Code  
BCIDA

Scale  
1:500 @ A1  
1:1000 @ A3

Drawn  
P.POCZATKO

Checked  
J.HAWE

Approved  
C.ACTON

Engineering Designer  
**AECOM**  
**MOTT MACDONALD**

QMS Code

Programme Title <b>BUSCONNECTS DUBLIN CORE BUS CORRIDORS INFRASTRUCTURE WORKS</b>
Drawing Title CLONGRIFFIN TO CITY CENTRE CORE BUS CORRIDOR SCHEME TRAFFIC SIGNS AND ROAD MARKINGS
Drawing File Name BCIDA-ACM-TSM_GA-0001_XX_00-DR-CR-0017
Sheet Number 17 of 21
Status A
Rev M01

DO NOT SCALE USE FIGURED DIMENSIONS ONLY

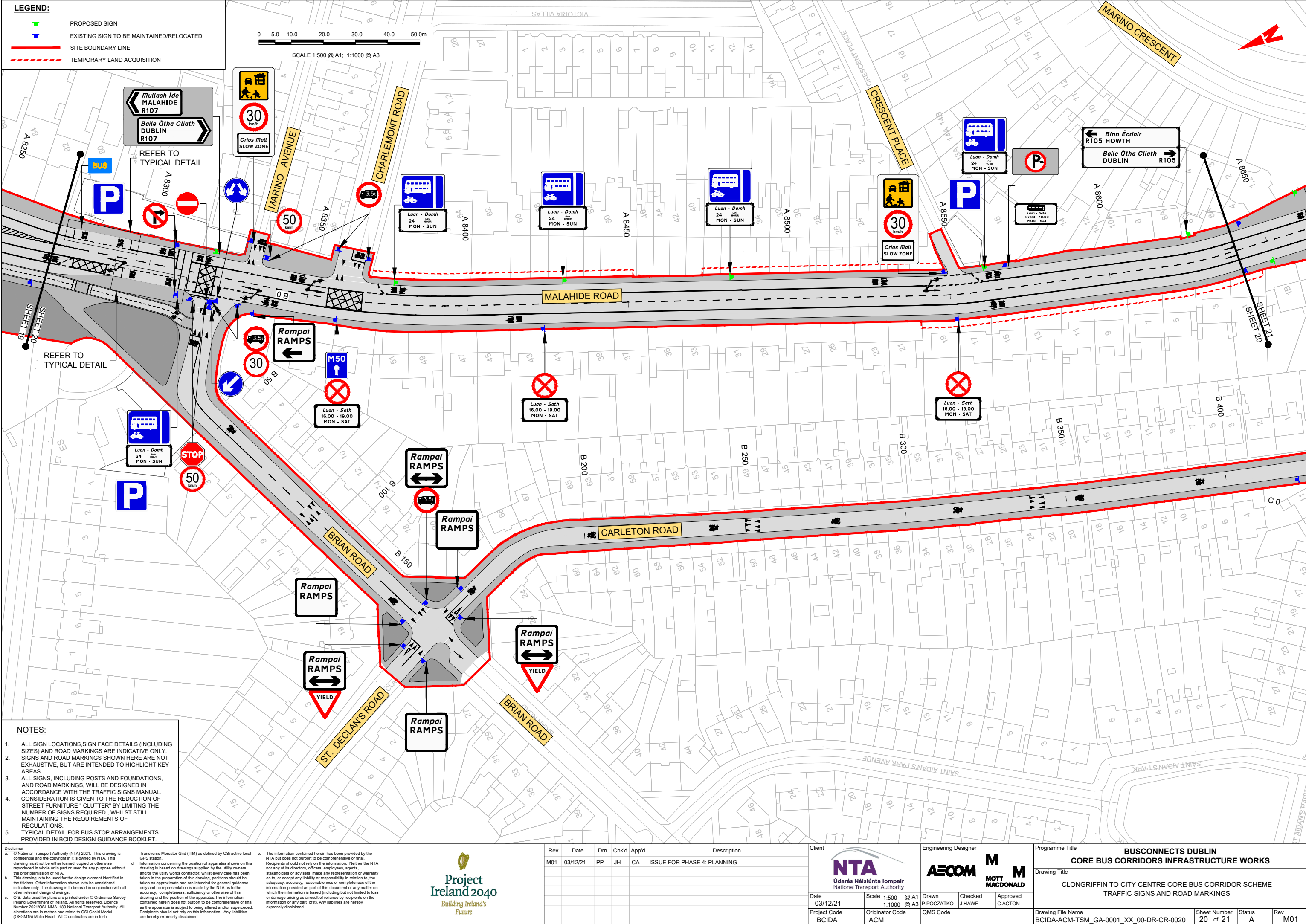




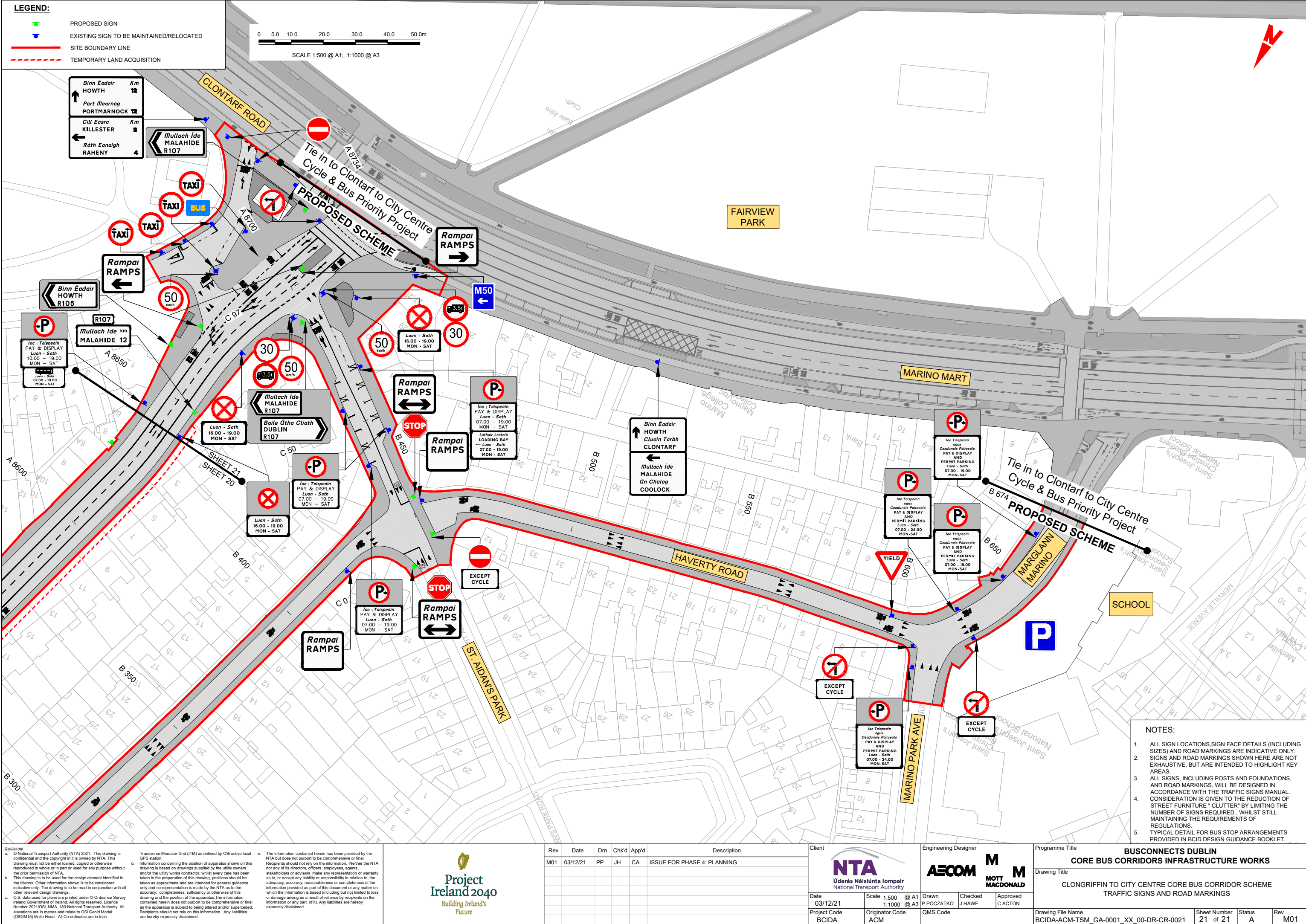
















Údarás Náisiúnta Iompair  
National Transport Authority

National Transport Authority  
Dún Scéine  
Harcourt Lane  
Dublin 2  
D02 WT20



Project Ireland 2040  
*Building Ireland's Future*